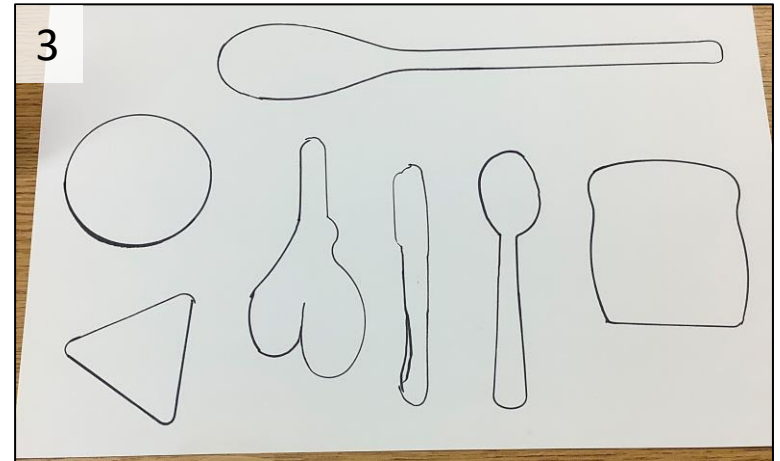
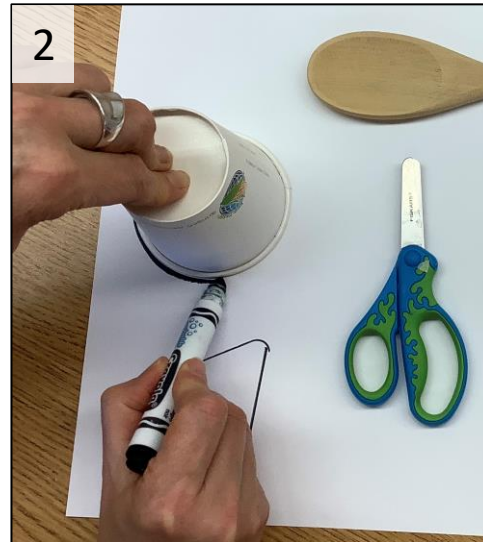
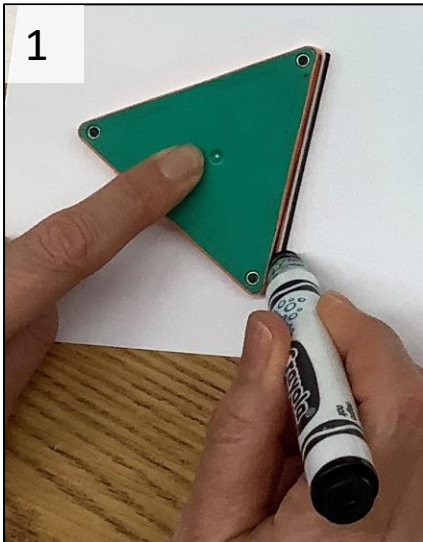


Homemade Shape Puzzles

- ❑ **What you need**
 - Household items
 - Paper
 - Marker



❑ Steps



1, 2. Place the household items you have chosen on the paper, then trace the outline of these items with a marker.

3. Once you've completed tracing, take the items off the paper, and you now have the outlines.



4, 5. Place the household items next to the paper. Encourage your child to "match" the items with the right shapes.



Try this:
- Place the household items back where they belong, and encourage the children to find them. They can try and match the right items to the paper.

Photo from:

https://www.cbc.ca/parents/play/view/play_date_idea_homemade_shape_puzzle?epik=dj0yJnU9VWFGZ0ttWkRyTWRIYVM0WEhjzBnNE5yQWI6WWV0UmgmcD0wJm49UUxhYUozY19YcloyRUo2aFFfVlc3QSZ0PUFBQUFBROfScnRN

For more home activity ideas, resources and information about our free programs, visit bflgrowscommunity.org
We are grateful to our partners at MOSAIC and Burnaby School District LINC for their support of these resources for families.